

Features

Thermal Server Coffee Brewer

- Brews 3.9 gallons of perfect coffee per hour.
- Brewer measures only 9" wide.
- Convenient thermal servers keep coffee hot and fresh for hours.
- Thermal servers are easily transported to remote meeting rooms, breakfast bars, etc.
- Pourover model available (CW15-TS).
- Pourover feature included on automatic models.
- Internal components are constructed from stainless steel.
- Hot water faucet available.
- SplashGard® funnel deflects hot liquids away from the hand.
- Holds up to 4" cup.



Model CWTF TS with Thermal Server

(Thermal Server not included)

Dimensions: 27.6" H x 9" W x 18.5" D

Related Products

For current specification sheets and other information, go to www.bunnomatic.com.

BUNN recommends the use of our Easy Clear® Water Quality Systems and BUNN paper filters to assure perfect taste.

Easy Clear® EQ-17-TL
Product No. : 30200.1000
Dimensions:
12⁷/₁₆" H x 2¹/₂" W x 3" D

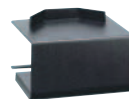


Easy Clear® ED-17-TL
Product No. : 30201.1001
Dimensions: 8¹/₄" H x 2⁵/₁₆" Dia.

Paper Filter Pack
Product No. : 20115.0000
Packed per case: 1,000
Dimensions: 4¹/₄" Base x 2³/₄" Sidewall



Thermal Server-Black
Product No. : 23300.0007
Capacity: 84 oz. (2.5 l)



Thermal Server Booster*
Product No. : 18010.6000
Capacity: 1 Thermal Server
Shipping Weight: 2 lbs. (.9 kg)
Dimensions: 6" H x 9¹/₄" W x 8¹/₄" D

*To be used in conjunction with Thermal Server without base.
Product No. : 23300.0010 & 23300.0006



ITEM#

PROJECT

DATE

International Model

CWTF A-TS

Model

*CW TS
CWT TS
CWTF TS*

BUNN®

Corporate Offices
1400 Stevenson Drive
Springfield, Illinois 62703
Phone
800-637-8606
217-529-6601
Fax
217-529-6644
Technical Services
800-286-6070
Internet
<http://www.bunnomatic.com>

Western Regional Office
16431 Carmenita Road,
Cerritos, California 90701
Phone
562-926-0764
Fax
562-926-0858

Canadian Office
280 Industrial Parkway South
Aurora, Ontario, L4G 3T9
Phone
905-841-2866
Fax
905-841-2775

BUNN® practices continuous product research and improvement. We reserve the right to change specifications and product design without notice. Such revisions do not entitle the buyer to corresponding changes, improvements, additions or replacements for previously purchased equipment.

Patents
Apply



Dimensions & Specifications

Model	Product #	Volts	Amps	Tank Heater Watts	Total Watts	Brewing Capacity	Cu. Ft.	Shipping Weight	Cord Attached
CW15-TS (Pourover)	23000.0000	120	13.5	1320	1520	3.9 gal./hr.	6.1	27 lbs. (12.3 kg)	Yes
CWT15-TS (Automatic)	23000.0003	120	13.5	1320	1520	3.9 gal./hr.	6.1	29 lbs. (13.2 kg)	Yes
CWTF15-TS (Automatic)*	23000.0006	120	13.5	1320	1520	3.9 gal./hr.	6.1	32 lbs. (14.6 kg)	Yes

*Includes faucet

Electrical: 2-wires plus ground service rated 120V, single phase, 60Hz.

Plumbing: 20-90 psi (69-621 kPa). Supplied with ¼" (6.4 mm) male flare fitting.

