

## Features

### 12 Cup Automatic Coffee Brewer

- Brews 3.9 to 6.8 gallons of perfect coffee per hour.
- All stainless steel construction.
- Can also be operated as a pourover unit.
- Designed to function well in low or uneven water pressure situations.
- Faucet kit available.
- SplashGard® funnel deflects hot liquids away from the hand.
- UL listed. NSF approved.



*Model OL15*

*(2 warmers)*

*(decanters not included)*

Dimensions: 23.5" H x 12" W x 18.3" D

## Related Products

For current specification sheets and other information, go to [www.bunnomatic.com](http://www.bunnomatic.com).

BUNN recommends the use of our Easy Clear® Water Quality Systems and BUNN paper filters to assure perfect taste.

**Easy Clear® EQ-17-TL**  
Product No. : 30200.1000  
Dimensions:  
12<sup>7</sup>/<sub>16</sub>" H x 2<sup>1</sup>/<sub>2</sub>" W x 3" D



**Easy Clear® ED-17-TL**  
Product No. : 30201.1001  
Dimensions: 8<sup>1</sup>/<sub>4</sub>" H x 2<sup>5</sup>/<sub>16</sub>" Dia.

**Paper Filter Pack**  
Product No. : 20115.0000  
Packed per case: 1,000  
Dimensions: 4<sup>1</sup>/<sub>4</sub>" Base x 2<sup>3</sup>/<sub>4</sub>" Sidewall



### Easy Pour® black decanter

Product No. : 06100.0101

Quantity: 1 (also packaged in quantities of 2, 3, 6, 12, & 24)



### 1GPR SS Portable Server on an RWS1 Warmer

1GPR Product No. : 12487.0001\*

RWS1 Product No. : 12203.0010

\*Also available with side handles or black decor.



ITEM#

PROJECT

DATE

## Model

*OL15*

*OL20*

*OL35*

## BUNN®

**Corporate Offices**  
1400 Stevenson Drive  
Springfield, Illinois 62703

**Phone**  
800-637-8606  
217-529-6601

**Fax**  
217-529-6644

**Technical Services**  
800-286-6070

**Internet**  
<http://www.bunnomatic.com>

### Western Regional Office

16431 Carmenita Road,  
Cerritos, California 90701

**Phone**  
562-926-0764  
**Fax**  
562-926-0858

### Canadian Office

280 Industrial Parkway South  
Aurora, Ontario, L4G 3T9

**Phone**  
905-841-2866  
**Fax**  
905-841-2775

BUNN® practices continuous product research and improvement. We reserve the right to change specifications and product design without notice. Such revisions do not entitle the buyer to corresponding changes, improvements, additions or replacements for previously purchased equipment.

Patents  
Apply



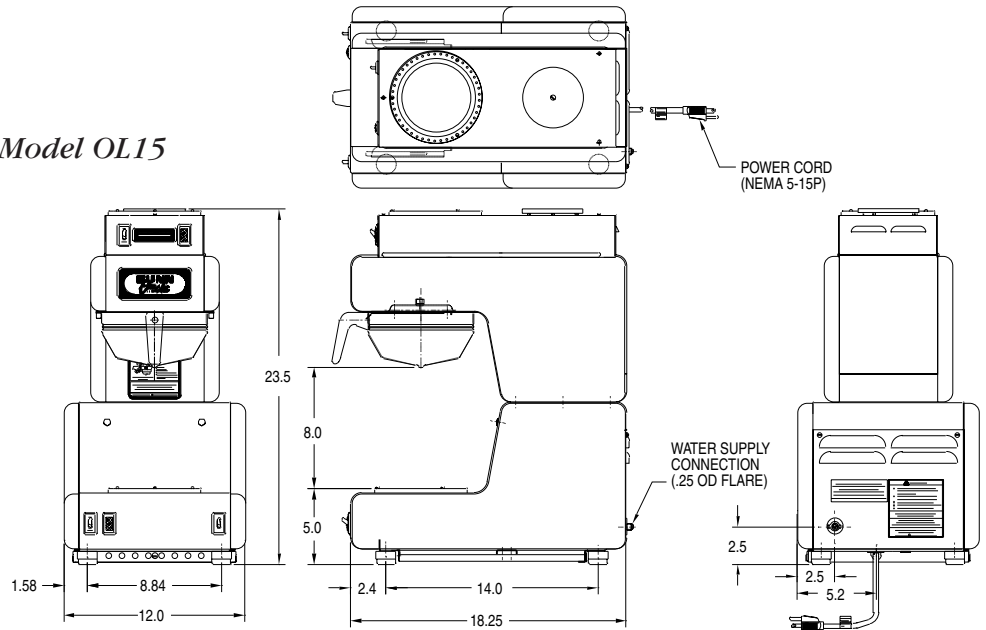
## Dimensions & Specifications

Model	Product #	Volts	Amps	Tank Heater Watts	Total Watts	Brewing Capacity	Cu. Ft.	Shipping Weight	Cord Attached
OL 15	20820.0000	120	13.96	1425	1675	3.9 gal./hr.	5.1	35 lbs. (15.9 kg)	Yes
OL 20	20820.0001	120	17.09	1800	2050	5.5 gal./hr.	5.1	34 lbs. (15.5 kg)	No
OL 35	20820.0002	120/240	16.67	3500	3750	6.8 gal./hr.	5.1	34 lbs. (15.5 kg)	No

Electrical: OL 15 requires 2-wires plus ground service rated 120V, single phase, 60Hz.  
 OL 20 requires 2-wires plus ground service rated 120V, single phase, 60Hz.  
 OL 35 requires 3-wires plus ground service rated 120/208 or 120/240V, single phase, 60Hz.

Plumbing: 10-90 psi (69-621 kPa). Supplied with ¼" male flare fitting.

Model OL15



Model OL20 & OL35

