

# **BUNN**®

## ***TF SERVER***



## **USE & CARE INFORMATION**

**CAUTION-** CLEAN AND SANITIZE YOUR SERVER BEFORE USING. SEE NOTE 1 of DAILY CLEANING.

## **BUNN-O-MATIC CORPORATION**

POST OFFICE BOX 3227  
SPRINGFIELD, ILLINOIS 62708-3227  
PHONE: (217) 529-6601 FAX: (217) 529-6644

## INTRODUCTION

This server is intended for use with a BUNN® DUAL® TF DBC or SINGLE® TF DBC coffee brewer only. When proper precautions are followed, up to 1.5 gallons of coffee may be brewed directly into the server and then transported to a remote serving location. The server must be placed on a sturdy counter or shelf.

## USER NOTICES

The notices on this server should be kept in good condition. Replace unreadable or damaged labels.

#26186.0000

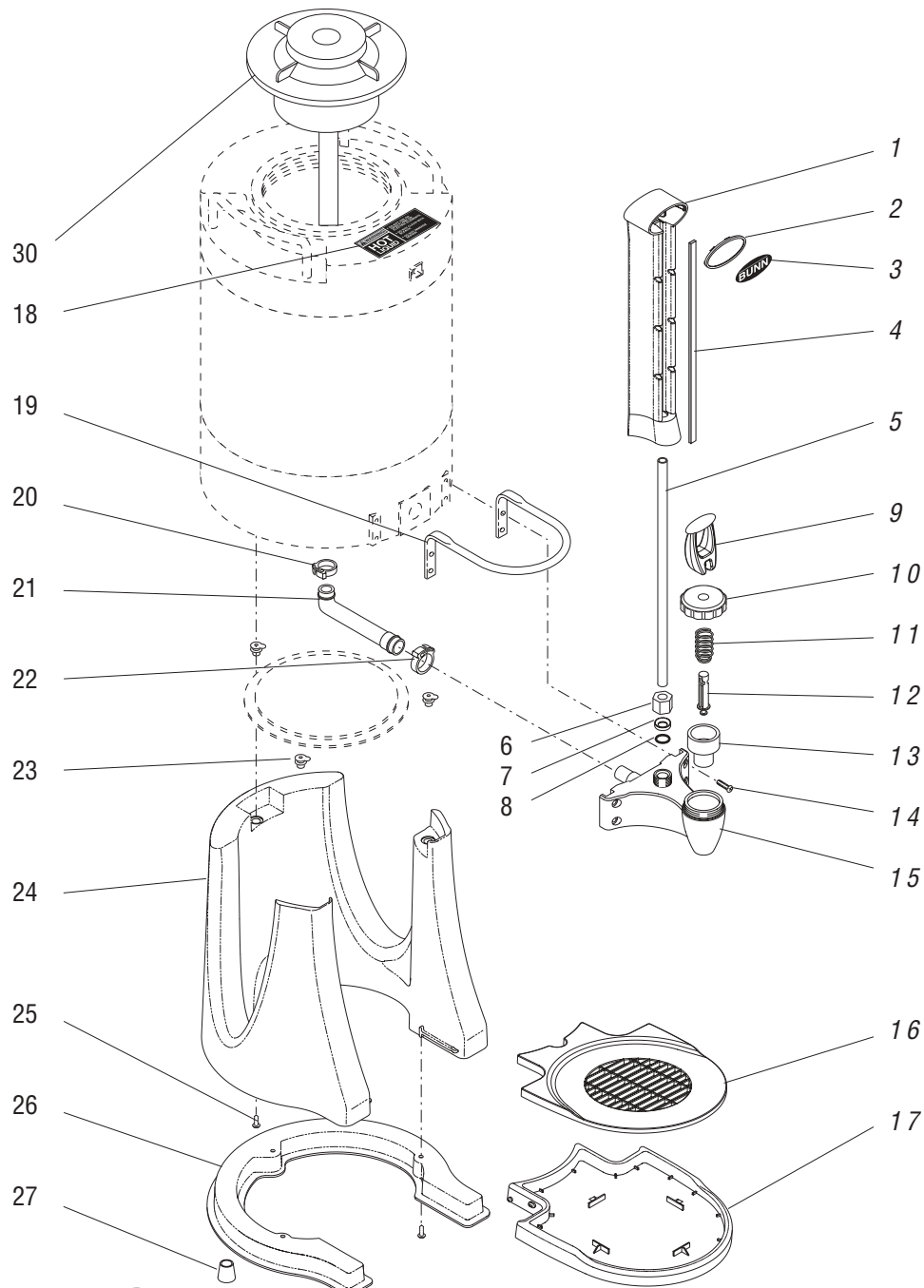


## DAILY CLEANING

**CAUTION** - CLEAN AND SANITIZE YOUR SERVER **DAILY**

**NOTE** - Bunn-O-Matic recommends the 3 step method for cleaning and sanitizing the server. The 3 step method consists of hot soapy water using an approved detergent, a fresh water rinse, and an aqueous sanitizing solution using an approved **non-chlorine** sanitizer. **Do not submerge server.**

1. Run a complete brew cycle *of just hot water* into the server and let it set for a minute. Empty the server completely by opening the faucet.
2. Remove the lid, fill server with cleaning solution and thoroughly clean the inside of server.
3. Rinse server thoroughly using fresh water rinse.
4. Fully fill server with sanitizing solution for 5 minutes then drain through fully open faucet.
5. Remove the large plastic cover from the bottom of the server, then remove the clamps and silicone tube from the server.
6. Remove the faucet handle/stem assembly by unscrewing the faucet nut just beneath the faucet handle.
7. Remove sight gauge shroud by pulling straight up. Remove sight gauge tube, nut, ferrule and o-ring.
8. Use enclosed cleaning brush to thoroughly clean the fill tube of the lid assembly, faucet, and sight gauge tube.
9. Disassemble the faucet/stem assembly. Thoroughly wash all faucet parts, lid, and silicone tube in a mild detergent and water solution. Rinse the parts in hot water. Sanitize the parts for five minutes, then air dry completely.
10. Reassemble the faucet and attach it, the lid, sight gauge and silicone tube to the dispenser.
11. Wash the entire outside surface of the server with a clean damp cloth.



## REPLACEMENT PARTS

1.	35006.1000	Shroud, Sight Gauge (Incl. item 4)	17.	35008.0000	Drip Tray
2.	35010.0000	Plate, Decal Mounting	18.	26186.0000	Decal, Warning Hot Liquid
3.	35009.0000	Decal, Bunn	19.	35001.0000	Guard, Faucet
4.	35004.0000	Backing, Sight Gauge	20.	12422.0006	Clamp, Tube .53"/.59" I.D.
5.	35005.0000	Sight Gauge Tube	21.	35342.0000	Tube, Silicone
6.	35131.0000	Nut, Hex .312" O.D. Tube	22.	12422.0001	Clamp, Tube .59"/.66" I.D.
7.	35130.0000	Ferrule, Poly .25" I.D. Tube	23.	35016.0000	Insert, Stand
8.	35073.0000	O-Ring, Sight Gauge Tube	24.	34999.0000	Stand, Server
9.	35015.0000	Handle, Faucet	25.	01360.0001	Screw, Pan Hd Plascrew #6 x .60"
10.	35003.0000	Nut, Faucet Spout	26.	35007.0000	Base Plate, Stand
11.	00601.0000	Faucet Spring	27.	04811.0000	Foot, Rubber-Black .62" Dia.
12.	29164.0000	Faucet Stem	28.	35301.0000	Brush, Cleaning
13.	00600.0000	Faucet Seat Cup	29.	35071.0000	Decal, Black Wrap (Black Decor models only)
14.	35074.0000	Screw, Hex Hd Black M4 x .7x25	30.	35365.0000	Lid Assembly
15.	35002.0000	Spout, Faucet			
16.	35014.0000	Cover, Drip Tray			

## **BUNN-O-MATIC COMMERCIAL PRODUCT WARRANTY**

Bunn-O-Matic Corp. ("BUNN") warrants equipment manufactured by it as follows:

- 1) All equipment other than as specified below: 2 years parts and 1 year labor.
- 2) Electronic circuit and/or control boards: parts and labor for 3 years.
- 3) Compressors on refrigeration equipment: 5 years parts and 1 year labor.
- 4) Grinding burrs on coffee grinding equipment to grind coffee to meet original factory screen sieve analysis: parts and labor for 3 years or 30,000 pounds of coffee, whichever comes first.

These warranty periods run from the date of installation BUNN warrants that the equipment manufactured by it will be commercially free of defects in material and workmanship existing at the time of manufacture and appearing within the applicable warranty period. This warranty does not apply to any equipment, component or part that was not manufactured by BUNN or that, in BUNN's judgment, has been affected by misuse, neglect, alteration, improper installation or operation, improper maintenance or repair, damage or casualty. This warranty is conditioned on the Buyer 1) giving BUNN prompt notice of any claim to be made under this warranty by telephone at (217) 529-6601 or by writing to Post Office Box 3227, Springfield, Illinois 62708-3227; 2) if requested by BUNN, shipping the defective equipment prepaid to an authorized BUNN service location; and 3) receiving prior authorization from BUNN that the defective equipment is under warranty.

**THE FOREGOING WARRANTY IS EXCLUSIVE AND IS IN LIEU OF ANY OTHER WARRANTY, WRITTEN OR ORAL, EXPRESS OR IMPLIED, INCLUDING, BUT NOT LIMITED TO, ANY IMPLIED WARRANTY OF EITHER MERCHANTABILITY OR FITNESS FOR A PARTICULAR PURPOSE.** The agents, dealers or employees of BUNN are not authorized to make modifications to this warranty or to make additional warranties that are binding on BUNN. Accordingly, statements by such individuals, whether oral or written, do not constitute warranties and should not be relied upon.

If BUNN determines in its sole discretion that the equipment does not conform to the warranty, BUNN, at its exclusive option while the equipment is under warranty, shall either 1) provide at no charge replacement parts and/or labor (during the applicable parts and labor warranty periods specified above) to repair the defective components, provided that this repair is done by a BUNN Authorized Service Representative; or 2) shall replace the equipment or refund the purchase price for the equipment.

**THE BUYER'S REMEDY AGAINST BUNN FOR THE BREACH OF ANY OBLIGATION ARISING OUT OF THE SALE OF THIS EQUIPMENT, WHETHER DERIVED FROM WARRANTY OR OTHERWISE, SHALL BE LIMITED, AT BUNN'S SOLE OPTION AS SPECIFIED HEREIN, TO REPAIR, REPLACEMENT OR REFUND.**

In no event shall BUNN be liable for any other damage or loss, including, but not limited to, lost profits, lost sales, loss of use of equipment, claims of Buyer's customers, cost of capital, cost of down time, cost of substitute equipment, facilities or services, or any other special, incidental or consequential damages.